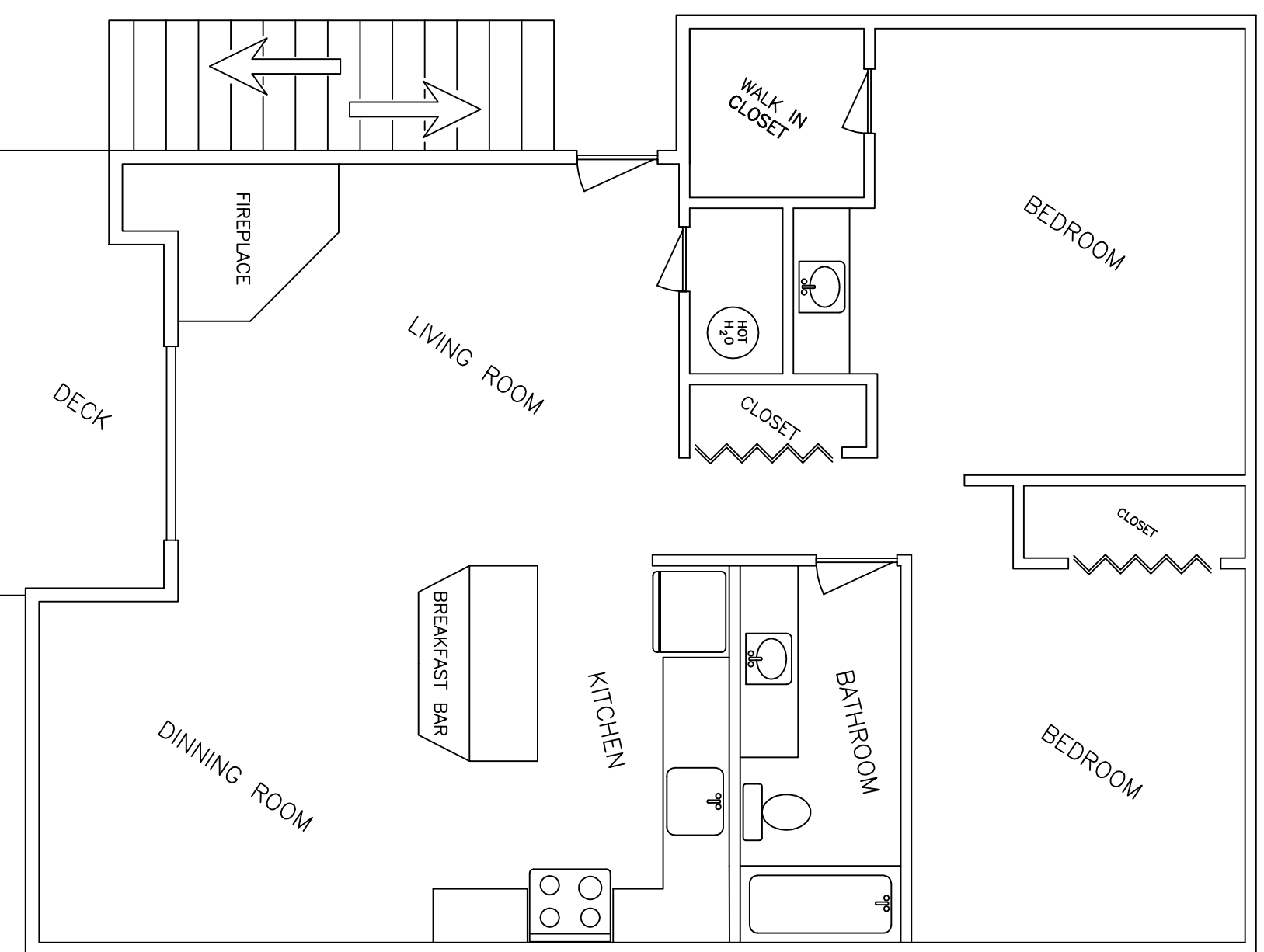
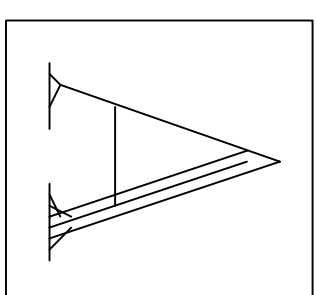


**VALLEY 206  
APARTMENTS**

SPOKANE HOUSING  
AUTHORITY

**FLOOR PLAN "A"  
2 BEDROOM ONE BATHROOM  
APPROX. 850 sq. ft.**



**AMMENTIES:**

- WOOD BURNING FIREPLACE
- REFRIGERATOR/FREEZER
- DISHWASHER
- AMPLE CUPBOARD SPACE
- LINOLEUM IN KITCHEN AND BATHROOM
- CARPET IN LIVING ROOM, DINNING ROOM, HALLWAY AND BEDROOMS
- FRIENDLY MANAGEMENT AND MAINTENANCE STAFF
- PRIVATE OUTSIDE DECK
- AIR-CONDITIONING

DRAWING BASED ON  
VALLEY 206 PAMPHLET.  
APRIL 2012  
REVISION 1  
DRAWN BY  
DARIN FAIRES