

# Spokane Valley's Best Kept Secret...



## Valley 206 Apartments!

Nestled in a park like setting, Valley 206 offers everything for you to enjoy. We offer several different amenities to suit everyone's style. The Valley 206 will provide you with the best service in town from our friendly staff in the office and on site.

Ask about our move-in specials!

- Variety of floor plans
- Beautiful courtyards/playground
- Year round pool/hot tub
- 24-hour Fitness Center
- Fireplace in most units
- Washer & Dryer in most units
- 855/850/630 sq. ft.
- Basketball area
- Close to bus lines and Valley Mall
- Staff on site
- Deposit—\$300
- Pet Friendly (under 30 lbs + \$100 pet deposit)

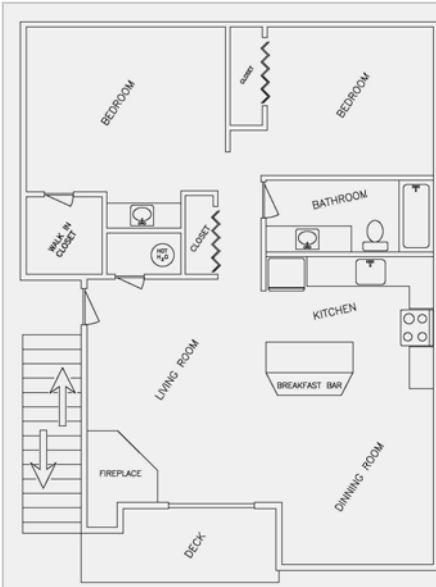


### Directions:

Take the Pines Road exit. Continue North on Pines. Turn left Mansfield. Skip roundabout, and take a right onto Wilbur Road. The community is on the right hand side.

**Valley 206 Office: 509-928-1073**  
**valley206@spokanehousing.org**  
**www.spokanehousing.org/Valley206**



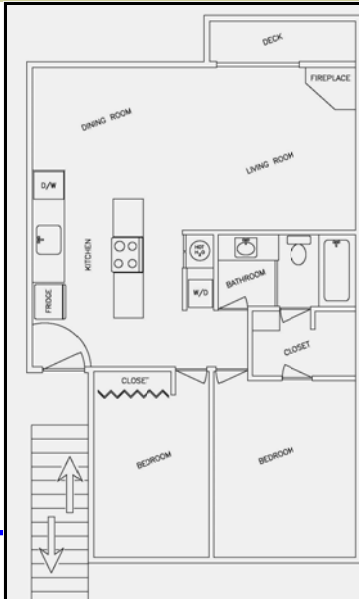


Floor Plan "A"  
2 Bedroom, 1 Bath  
Approx. 850 sq ft



Amenities:

- Wood Burning Fireplace
- Refrigerator / Freezer
- Dishwasher
- Ample Cupboard Space
- Linoleum in Kitchen and Bathroom
- Carpet in Living Room, Dining Room, Hallway, and Bedrooms
- Garage Included
- Private Outside Deck
- Air Conditioning

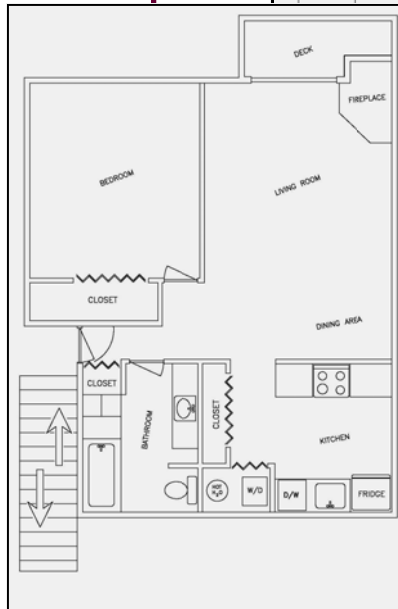


Floor Plan "B"  
2 Bedroom, 1 Bath  
Approx. 855 sq ft



Amenities:

- Wood Burning Fireplace
- Refrigerator / Freezer
- Dishwasher
- Ample Cupboard Space
- Linoleum in Kitchen and Bathroom
- Carpet in Living Room, Dining Room, Hallway, and Bedrooms
- Washer / Dryer Included
- Private Outside Deck / Patio
- Air Conditioning



Floor Plan "C"  
1 Bedroom, 1 Bath  
Approx. 630 sq ft



Amenities:

- Wood Burning Fireplace
- Refrigerator / Freezer
- Dishwasher
- Ample Cupboard Space
- Linoleum in Kitchen and Bathroom
- Carpet in Living Room, Dining Room, Hallway, and Bedrooms
- Stackable Washer / Dryer Included
- Private Outside Deck / Patio
- Air Conditioning